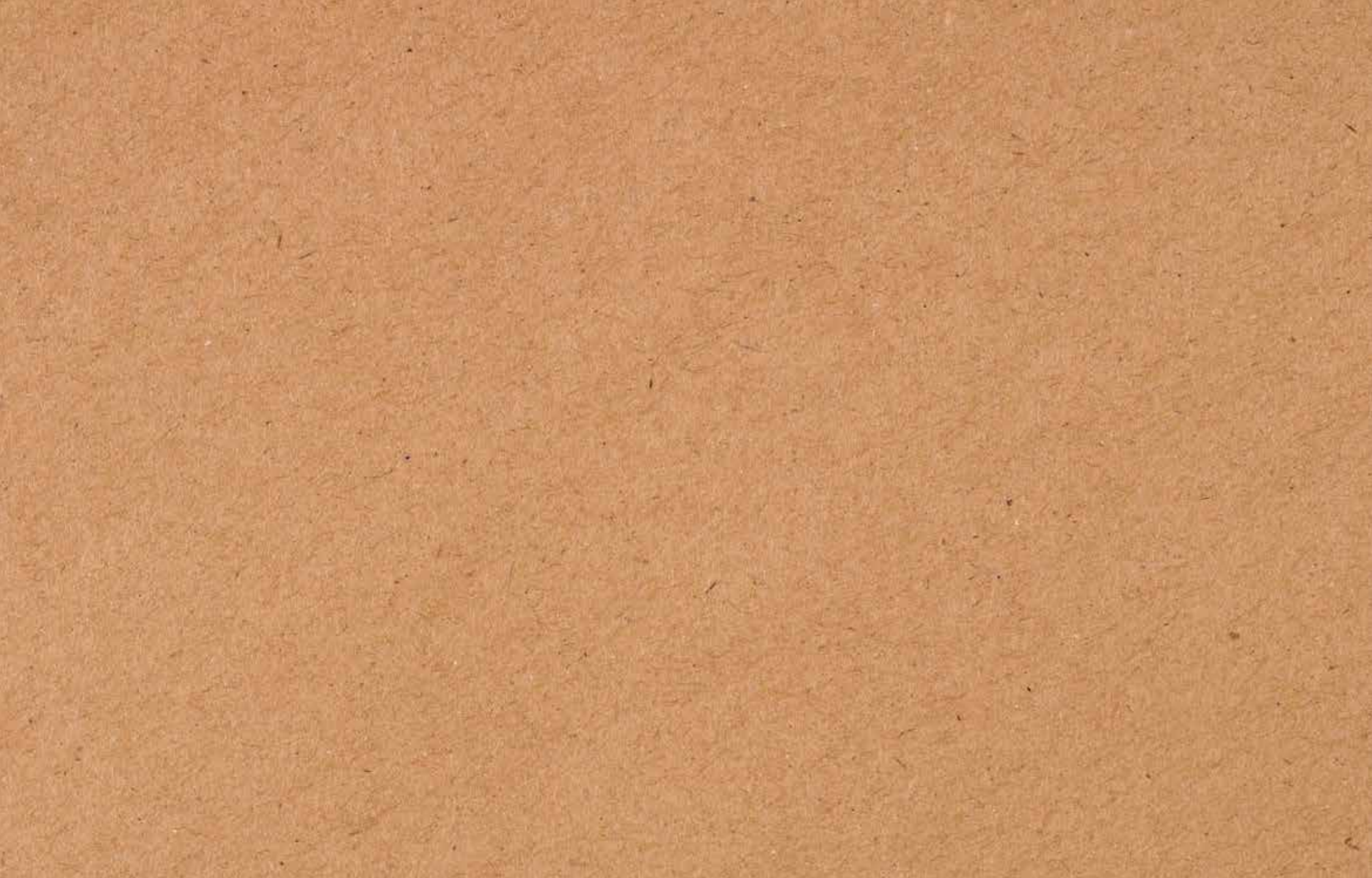


BLUEWATER PRO HOW TO USE GUIDE



BLUEWATER



**BLUEWATER PRO
HOW TO USE GUIDE**



ENG: The installation must comply with applicable local plumbing codes and regulations.

FR: L'installation doit respecter les normes et réglementations de plomberie locales applicables

ES: La instalación de fontanería debe cumplir con la reglamentación y las normativas locales.

PT: A instalação deve cumprir as normas e os regulamentos de canalização locais aplicáveis.

IT: L'installazione deve rispettare i codici e le regolamentazioni idrauliche locali vigenti.

DE: Die Installation muss die örtlichen Vorschriften und Richtlinien für Wasser bzw. Sanitäreanlagen erfüllen.

PL: Muszą być spełnione obowiązujące przepisy i regulacje dotyczące instalacji wodociągowej.

RU: Установка должна соответствовать действующим местным санитарным нормам и правилам.

SE: Installationen måste uppfylla gällande VVS-regler och -förfordningar.

FI: Asennus on tehtävä sovellettavien paikallisten LVI-sääntöjen ja -määräysten mukaisesti.

NO: Installasjonen må utføres i henhold til gjeldende praksis og bestemmelser for rørleggerarbeid.

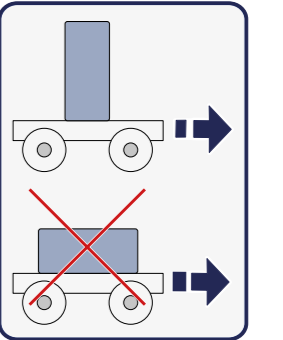
DK: Installationen skal overholde de gældende lokale regler og forskrifter for VVS-installationer.

ZH: 必须按照适用的当地管道标准和法规进行安装。

AR: اهدب لومعملة لة لملءة لكابسل ال رة رة و و نة ن اوق مع بة كرءة ال قفاوءة ن ا بة رة

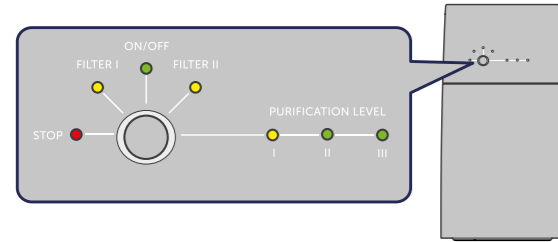
For products with serial number 220401001 and later.

You'll find everything you need to know regarding how to use your new Bluewater Pro purifier in this How to use Guide. Or scan the QR code for a user-friendly online version of the guide.



How to take care of your Bluewater Pro

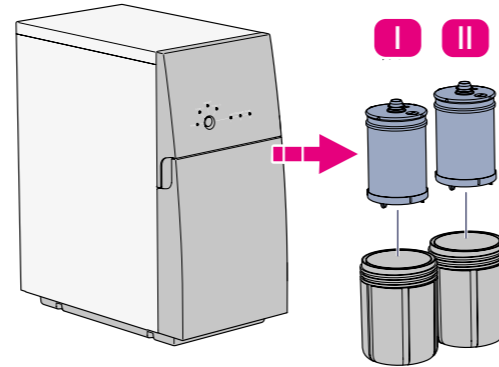
Check the indicator lights
- Regularly



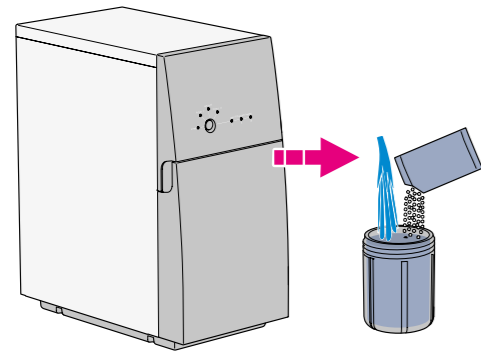
Check for leaks
- Regularly



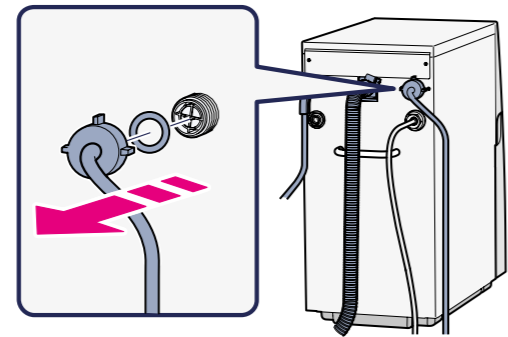
Change your prefilters
- Every 6th month or when the filter indicators are lit



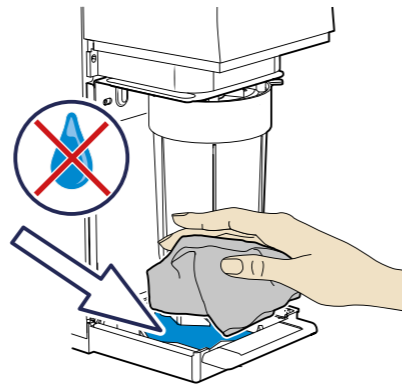
Descaling
- Every 4-6th month



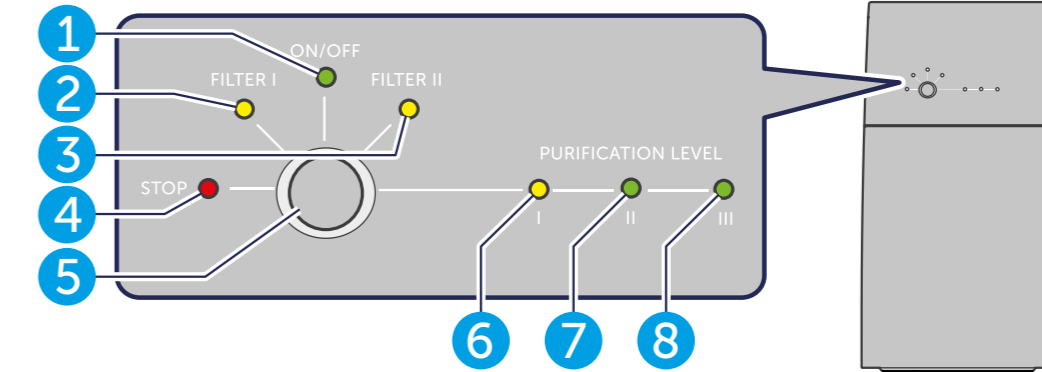
Clean the inlet grid filter
- Once a year



Wipe off condensation from base plate
- When necessary



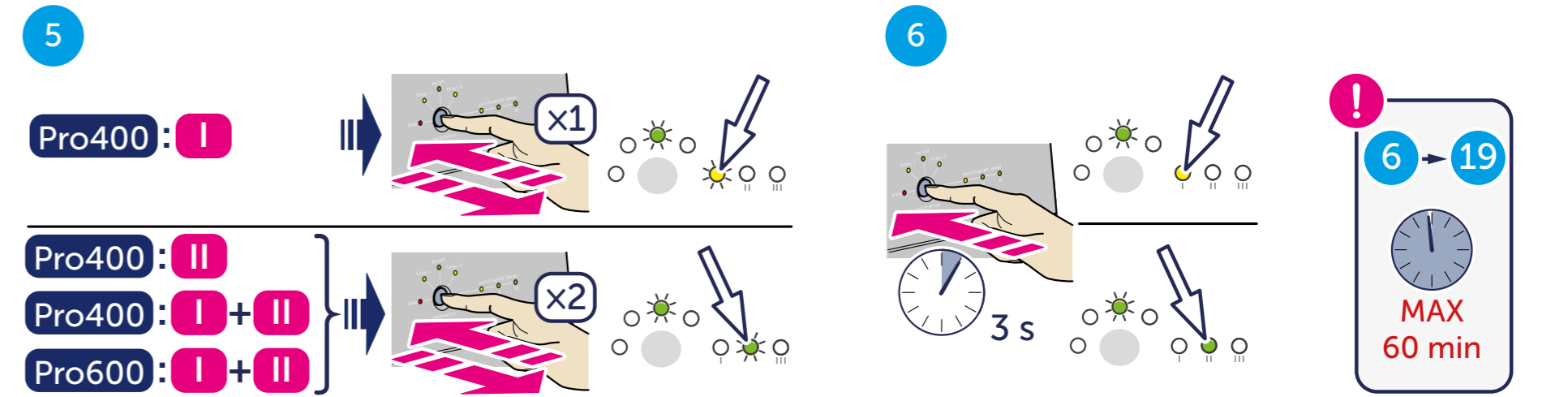
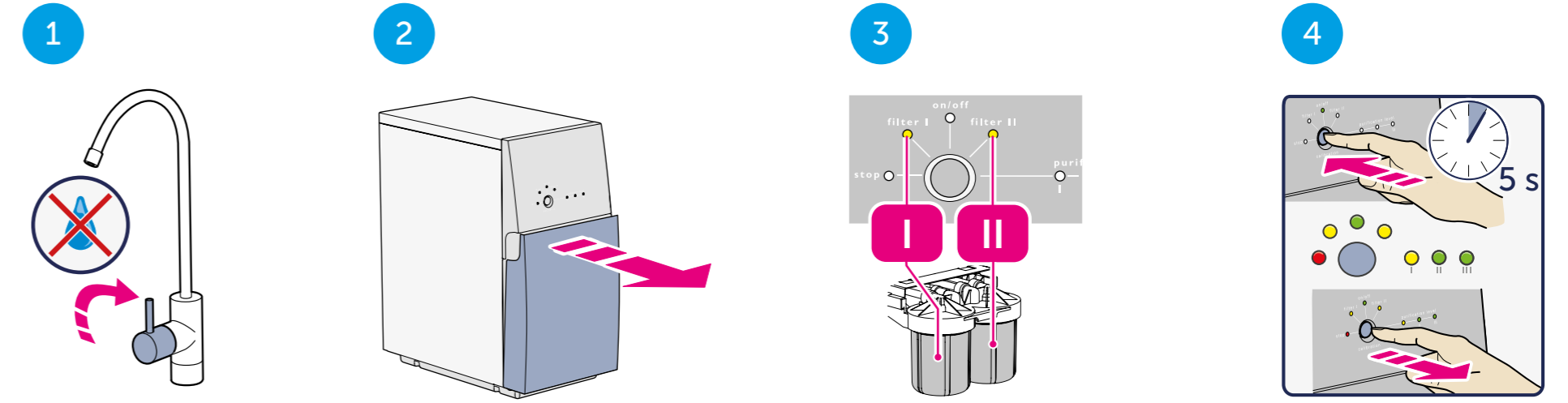
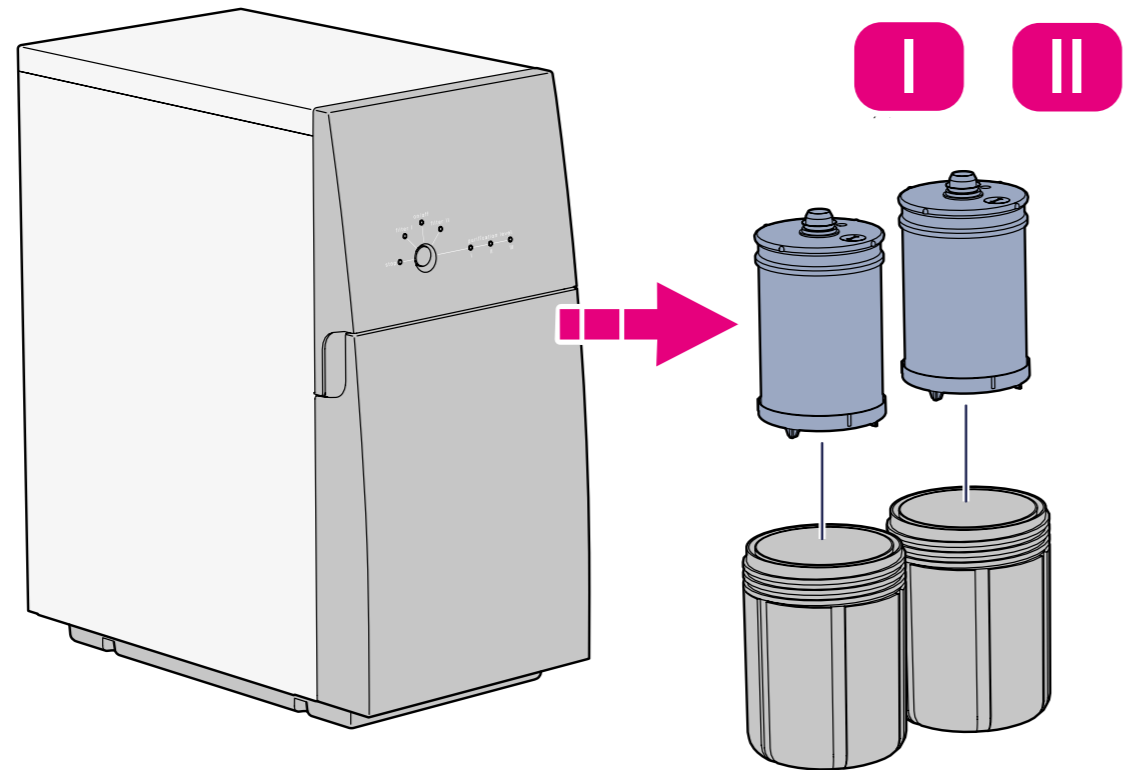
Check indicators lights



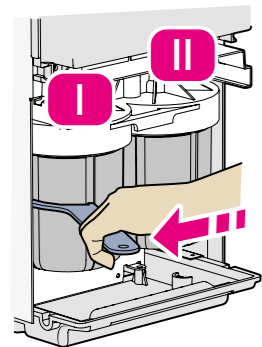
Pos	Light/Button	Description
1	ON/OFF	On: The water purifier is connected to power. Off: The water purifier is not connected to power. Flashes: The water purifier is flushing.
2	FILTER I	On: Pro 400: Replace FILTER I. Pro 600: Replace both FILTER I and II.
3	FILTER II	On: Pro 400: Replace FILTER II. Pro 600: Replace both FILTER I and II.
4	STOP	Flashes/On: Something is wrong, see "Troubleshooting".
5	Button	Various functions.
6	PURIFICATION LEVEL I	On: Incomplete purification: DO NOT DRINK.
7	PURIFICATION LEVEL II	On: Medium purification: Ready to drink.
8	PURIFICATION LEVEL III	On: Highest purification: Ready to drink.

Change the prefilters

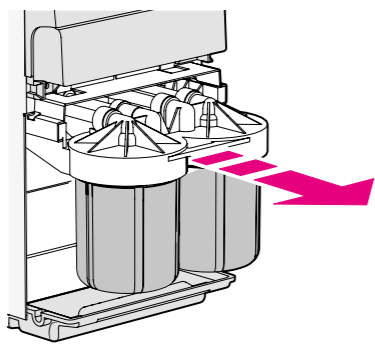
<https://www.bluewatergroup.com/where-to-buy/>
 Pro 600: change both filters when filter light I or II lights up.



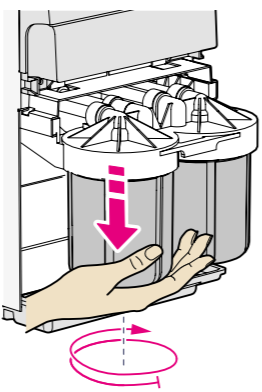
7



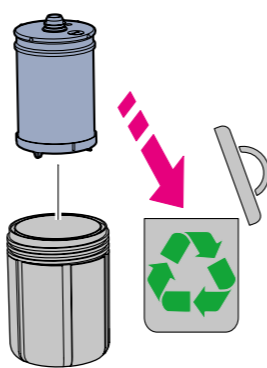
8



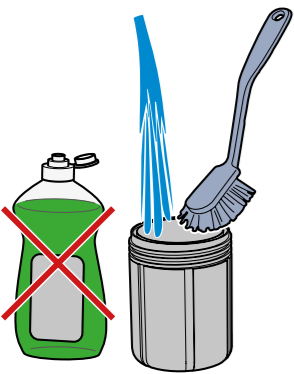
9



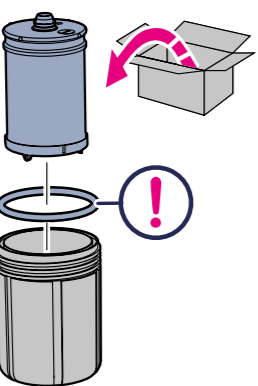
10



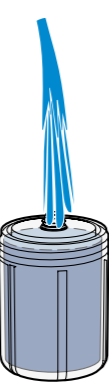
11



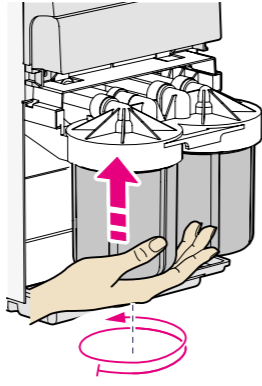
12



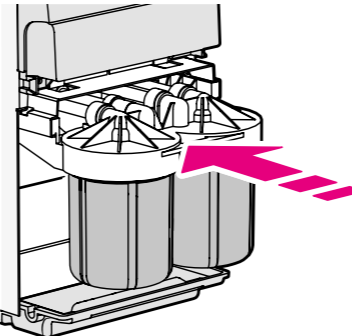
13



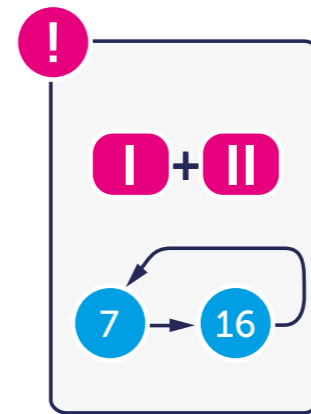
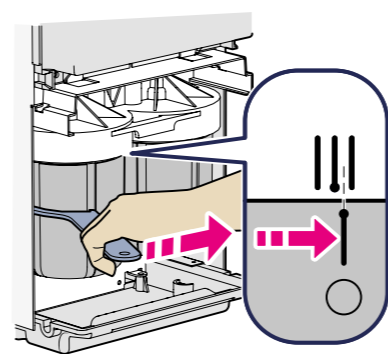
14



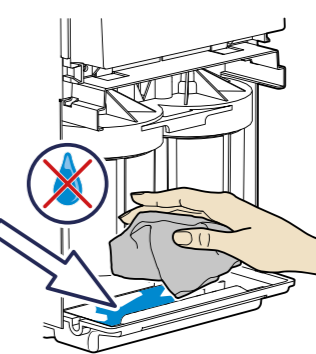
15



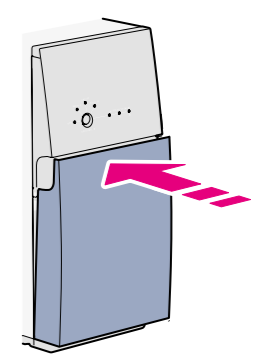
16



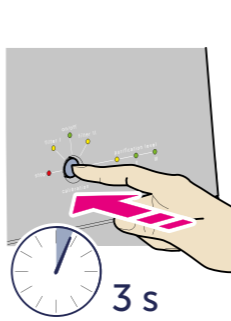
17



18



19



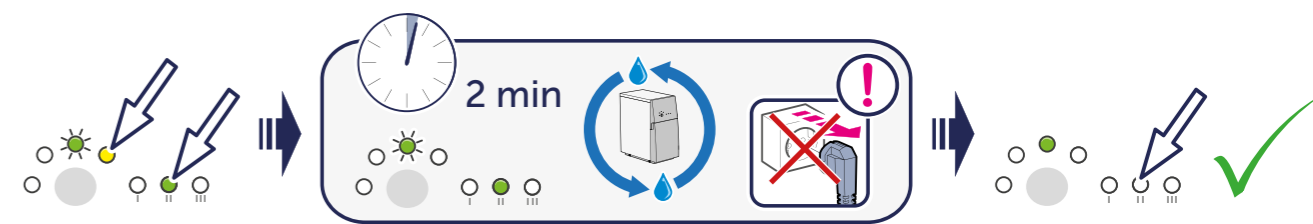
Pro400: I



Pro400: II

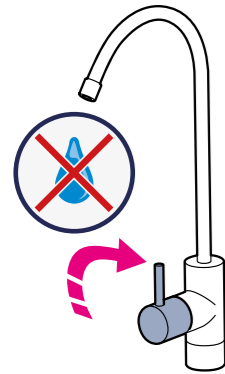
Pro400: I + II

Pro600: I + II

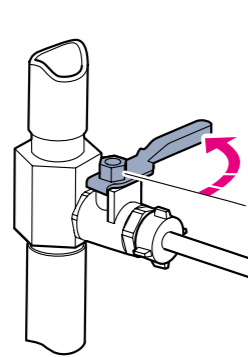


Descaling

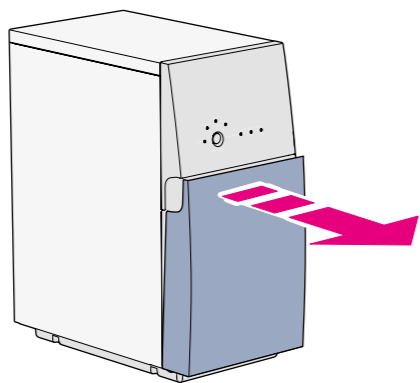
1



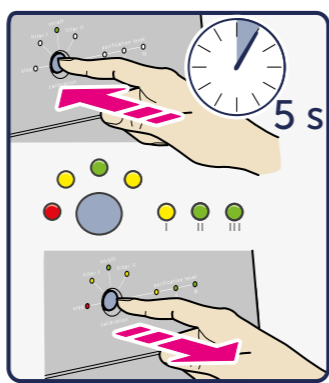
2



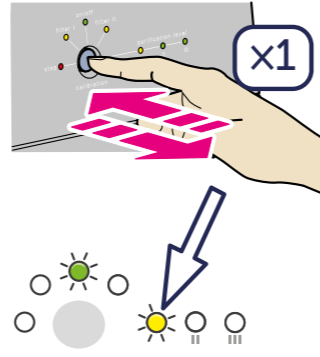
3



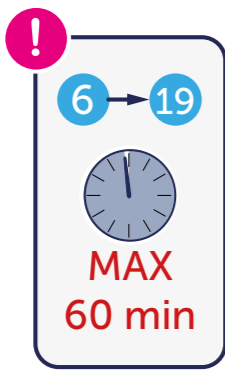
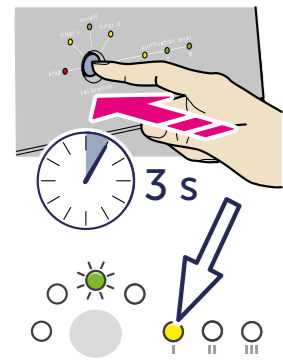
4



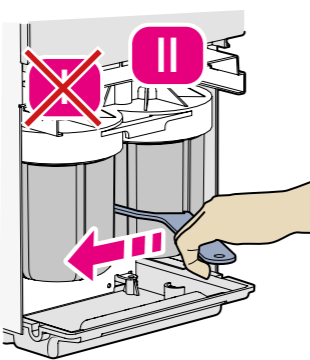
5



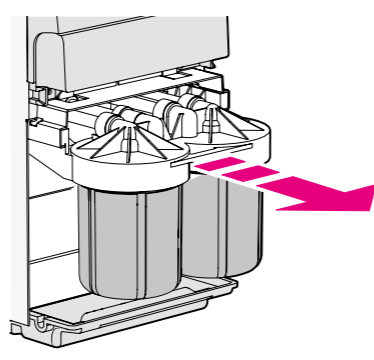
6



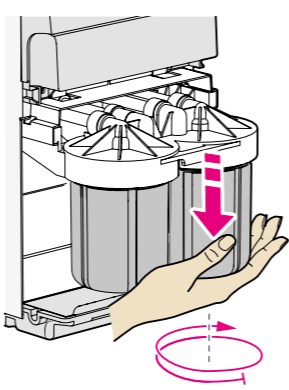
7



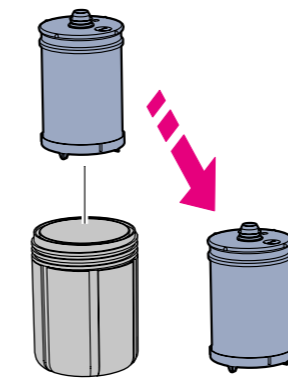
8



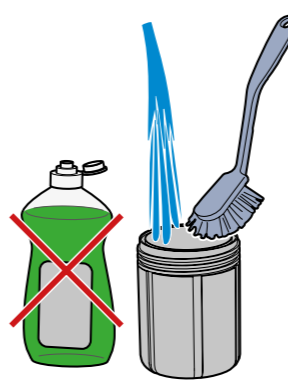
9



10



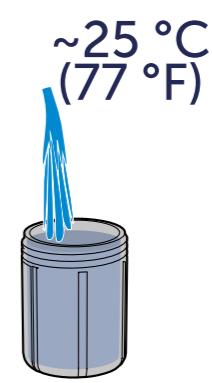
11



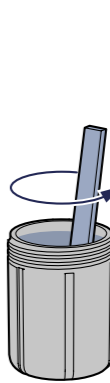
12



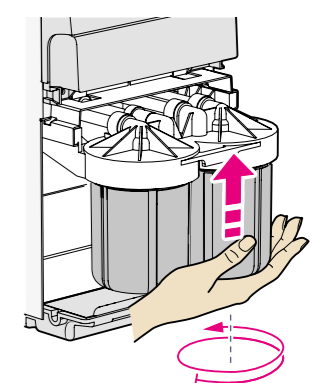
13



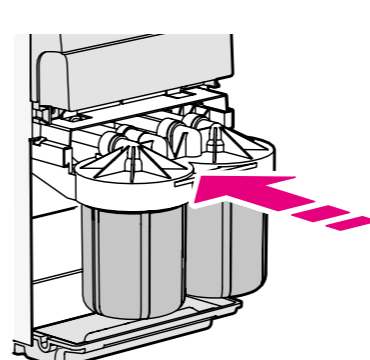
14



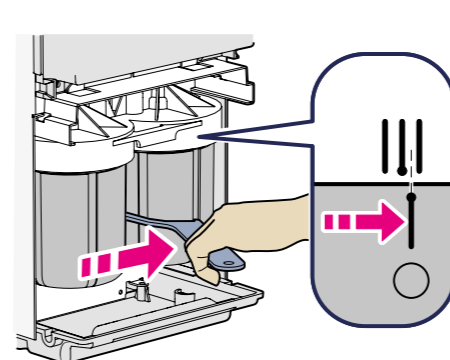
15



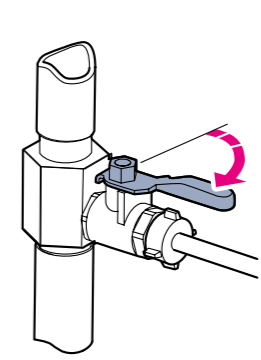
16



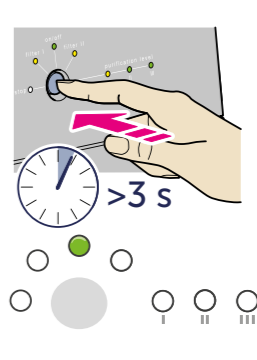
17



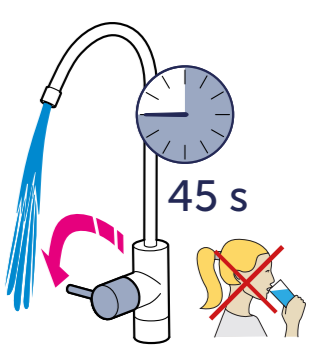
18



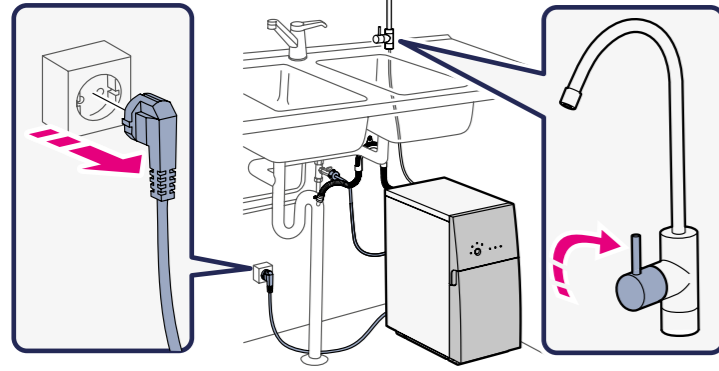
19



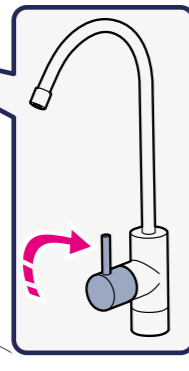
20



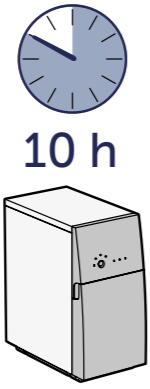
21



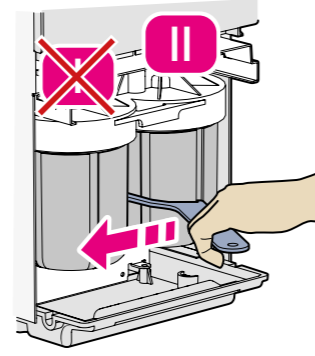
22



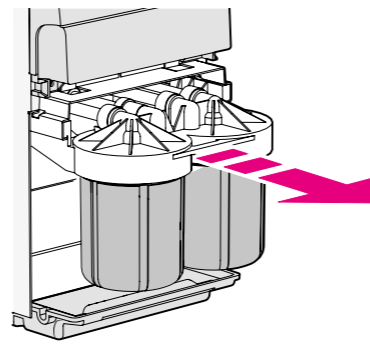
23



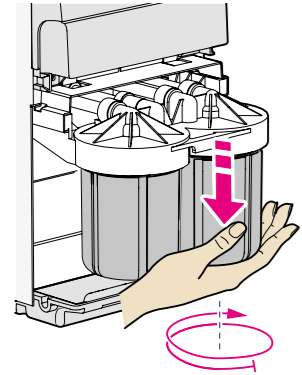
24



25



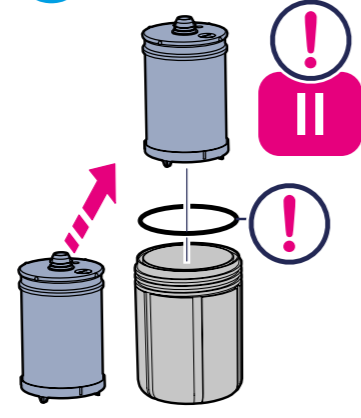
26



27



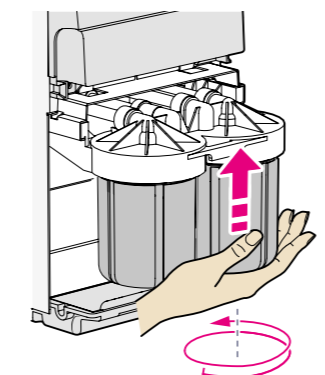
28



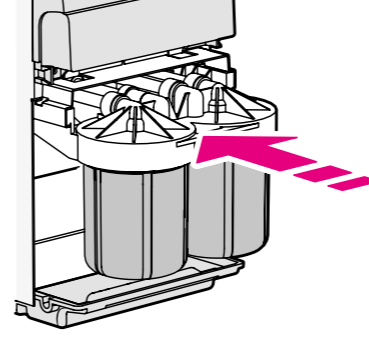
29



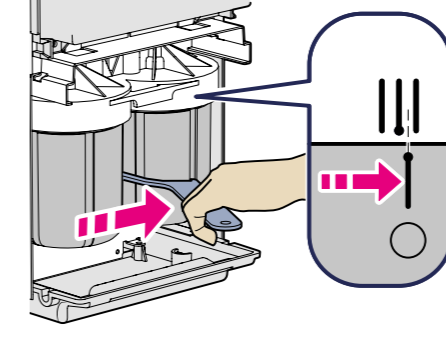
30



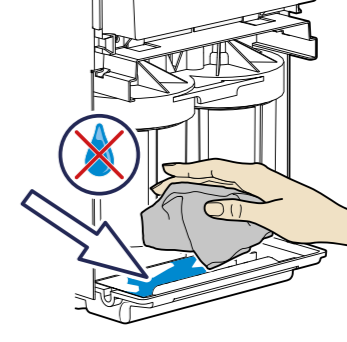
31



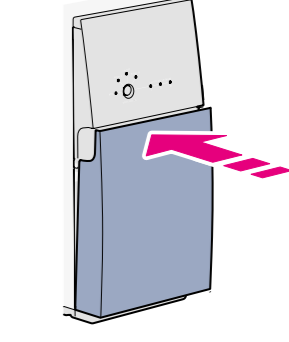
32



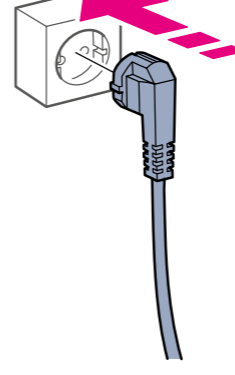
33



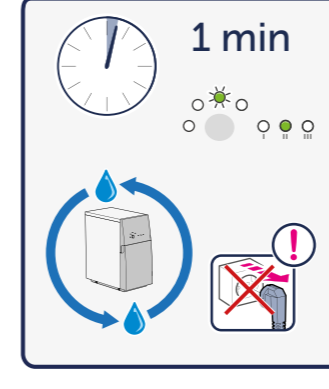
34



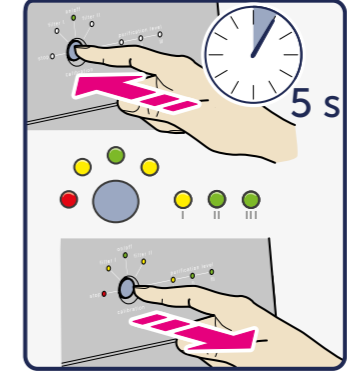
35



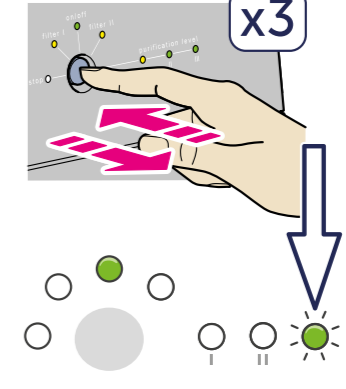
36



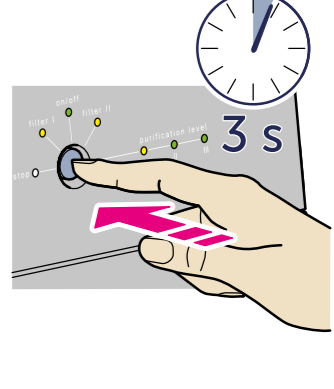
37



38



39



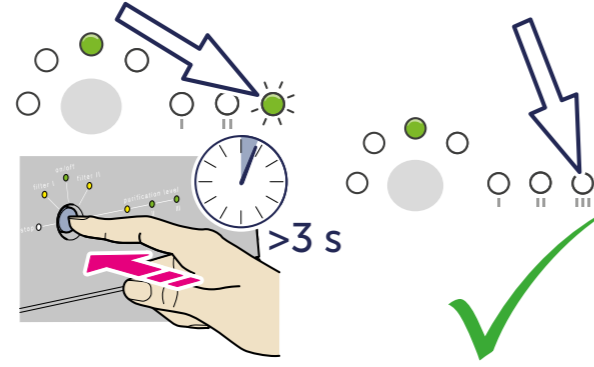
40



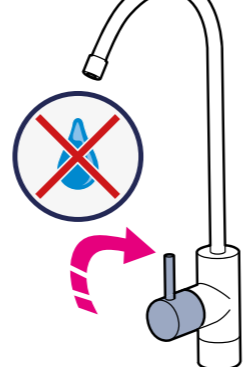
41



42

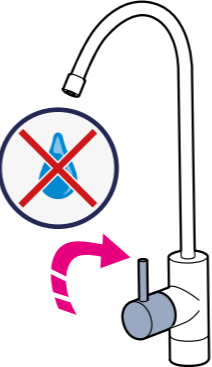


43

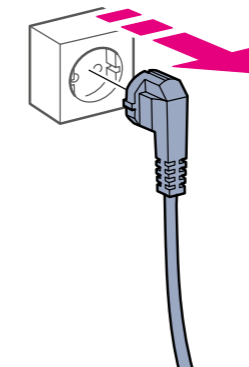


Clean the grid filter

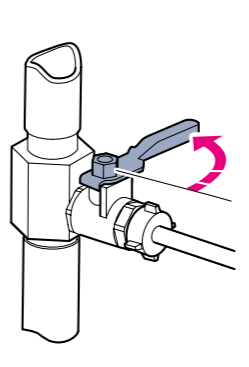
1



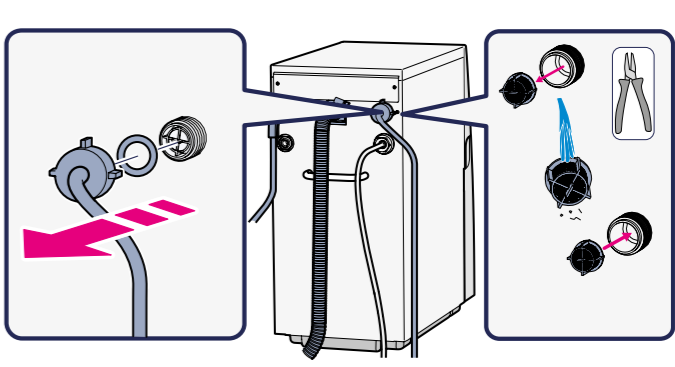
2



3

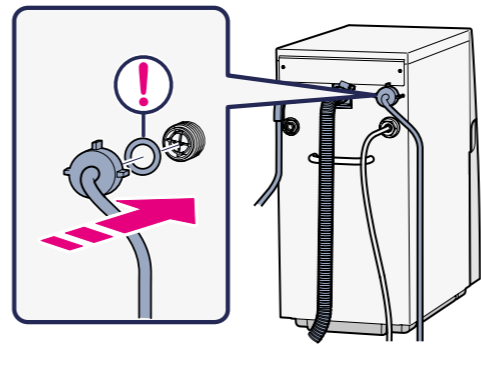


4

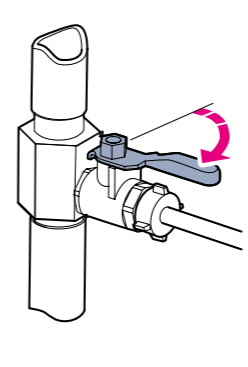


5

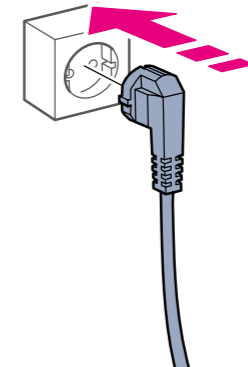
6



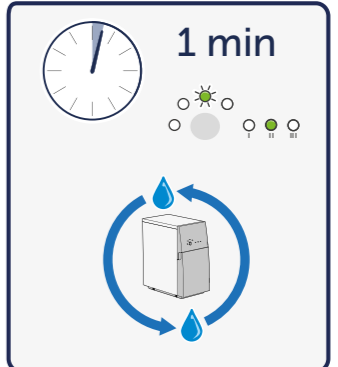
8



9



10



**FOR YOU &
OUR PLANET**



BLUEWATER IS A SWEDISH WATER
COMPANY THAT PURIFIES LOCAL
SOURCES OF WATER INTO PURER,
FRESH DRINKING WATER.
WE'RE COMMITTED TO REDUCING
PLASTICS IN OUR OCEANS BY
ELIMINATING THE NEED FOR
SINGLE-USE PACKAGING. JOIN US.

BLUEWATERGROUP.COM

BLUEWATER
Danderydsgatan 11
114 26 Stockholm
Sweden

info@bluewatergroup.com



BLUEWATER